

3.13.2 Home Science Paper 2 (441/2)

CHILD'S BLOUSE

More Past Papers: Visit - www.elimucentre.com

A pattern of a child's blouse is provided. You are advised to study the sketches, instructions and layout carefully before you begin the test.

MATERIALS PROVIDED

- 1 Pattern pieces
 - A. Blouse front
 - B. Blouse back
 - C. Sleeve
 - D. Sleeve band
 - E. Front neck facing
 - F. Back neck facing

- 2 Plain light weight cotton fabric 60 cm long by 91 cm wide.

- 3 Sewing thread to match.

- 4 One large envelope.

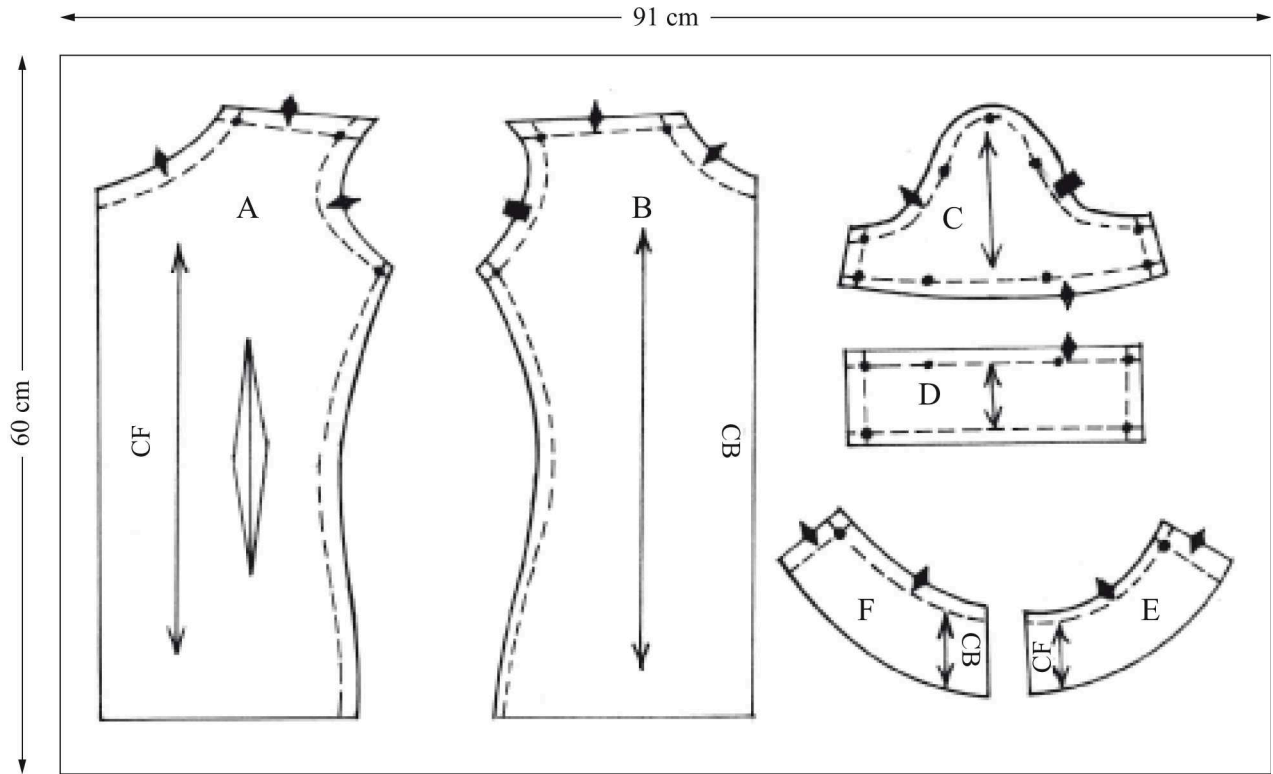
THE TEST

Using the materials provided, cut out and make the **RIGHT HALF** of the child's blouse to show the following processes:

- (a) making of the double pointed dart.
- (b) making of the shoulder seam using an open seam.
- (c) making of the side seam using a french seam
- (d) preparation of the sleeve to include: (i) french seam (ii) hemming the band half way.
- (e) attaching of the sleeve. **Do not neaten the seam.**
- (f) joining the front and back facing.
- (g) attaching the facing to finish the neckline and neatening the free edge.

At the end of the examination, firmly sew onto your work, on a single fabric, a label bearing your name and index number. Remove the needle, pins and loose threads from your work. Fold your work neatly and place it in the envelope provided. **Do not put scraps of fabric in the envelope.**

THE LAYOUT (not drawn to scale)



THE SKETCH

