

3.15.2 Agriculture Paper 2 (443/2)

SECTION A (30 marks)

Answer ALL the questions in this section in the spaces provided.

- 1 State **four** ways of controlling lice in poultry. (2 marks)
- 2 State **three** signs of heat observed in rabbits. ($1\frac{1}{2}$ marks)
- 3 Name **three** methods of extracting honey from combs. ($1\frac{1}{5}$ marks)
- 4 State **three** signs of broodiness in a hen. ($1\frac{1}{2}$ marks)
- 5 Give the **main** reason for each of the following in dairy farming: ($1\frac{1}{2}$ marks)
 - (a) milking quickly and evenly;
 - (b) milking at regular times;
 - (c) complete milking.
- 6 State **four** factors that stimulate milk let-down in a lactating cow. (2 marks)
- 7 State **four** signs of infestation by external parasites in goats. (2 marks)
- 8 Give **four** disadvantages of inbreeding in livestock production. (2 marks)
- 9 State **four** advantages of fish farming in Kenya. (2 marks)
- 10 Give **two** reasons for castration in piglets. (1 mark)
- 11 Name **two** practices that are carried out on eggs in preparation for marketing. (1 mark)
- 12 State **two** precautions that should be observed when shearing sheep to ensure production of high quality wool. (1 mark)
- 13 Name **four** parts of a farm building that can be reinforced using concrete. (2 marks)
- 14 State **four** factors that can affect digestibility of a feedstuff in livestock. (2 marks)
- 15 State **two** causes of soft shelled eggs. (1 mark)
- 16 Give **four** characteristics of a good site for a fish pond. (2 marks)
- 17 State **four** disadvantages of fold system in poultry rearing. (2 marks)
- 18 Name **four** methods of docking in sheep rearing. (2 marks)

SECTION B (20 marks)

Answer *ALL* the questions in this section in the spaces provided.

- 19 Below are photographs showing parts of a ruminant stomach. Study them and answer the questions that follow.



A



C



B



D

- (a) Identify the parts labelled A and B (2 marks)

A

B

- (b) State **one** function of the part labelled

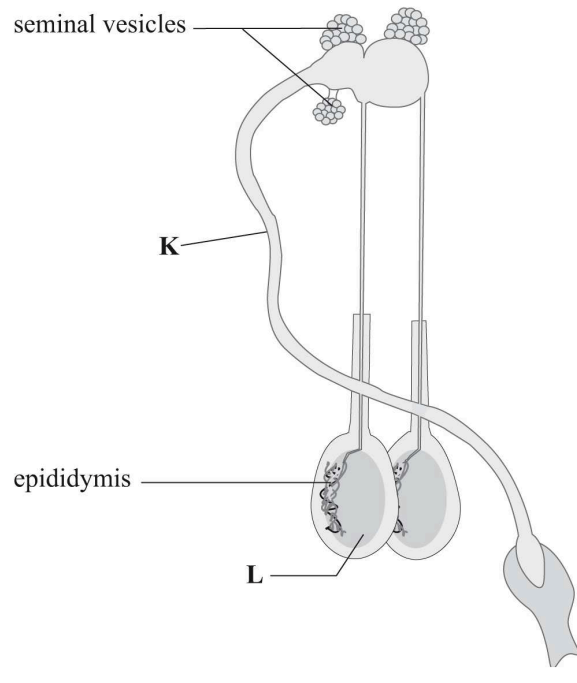
A (1 mark)

C (1 mark)

- (c) Name **one** enzyme that is produced in the part labelled D. (1 mark)



20 Below is a diagram illustrating the reproductive system of a bull. Study it and answer the questions that follow.



(a) Identify the parts labelled

K..... (1 mark)

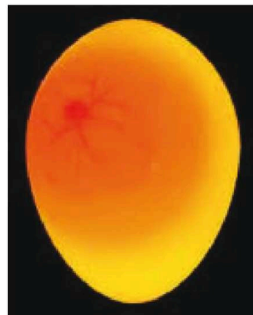
L..... (1 mark)

(b) State the function of the part labelled

Epididymis (1 mark)

Seminal vesicles (1 mark)

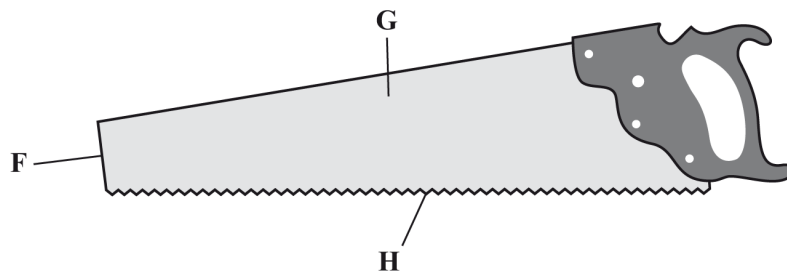
21 Below is a photograph showing an egg being candled. Study it and answer the questions that follow.



(a) Why is candling important in poultry farming? (1 mark)

- (b) What changes will be observed on the same egg if it was candled on the 18th day of incubation? (2 marks)

22 The following is an illustration of a handsaw. Study it carefully and answer the questions that follow.



- (a) Name the parts labelled

F (1 mark)

G (1 mark)

- (b) Explain **three** maintenance practices that should be carried out on the part labelled H. (3 marks)

23 Below is a diagram illustrating a farm implement. Study it and answer the questions that follow.



- (a) Identify the implement illustrated above. (1 mark)

(b) State the use of the:

(i) implement on the farm; (1 mark)

(ii) part of the implement labelled J. (1 mark)

SECTION C (40 marks)

*Answer any **TWO** questions from this section in the spaces provided after question 26.*

- 24** (a) Give **five** reasons for keeping livestock healthy. (5 marks)
- (b) Describe the symptoms of roundworm infestation in livestock. (7 marks)
- (c) Describe the control measures for cannibalism in layers. (8 marks)
- 25** (a) Describe the body conformation features of a dairy heifer. (5 marks)
- (b) State the disadvantages of using live fences on a farm. (7 marks)
- (c) Describe how a four-stroke cycle petrol engine works. (8 marks)
- 26** (a) Describe the disease control routine management practices in calf rearing. (7 marks)
- (b) Describe contagious abortion (Brucellosis) disease under the following sub-headings:
- (i) causal organism; (1 mark)
- (ii) animals affected; (2 marks)
- (iii) symptoms; (4 marks)
- (iv) control measures. (6 marks)

[More past papers at www.elimucentre.com](http://www.elimucentre.com)