

Name: Index Number:/.....

237/2

GENERAL SCIENCE

Paper 2

Oct./Nov. 2015

2½ hours

Candidate's signature:

Date:



THE KENYA NATIONAL EXAMINATIONS COUNCIL

Kenya Certificate of Secondary Education

GENERAL SCIENCE

Paper 2

2½ hours



02325240

Instructions to Candidates

- (a) Write your name and index number in the spaces provided above.
- (b) Sign and write the date of examination in the spaces provided above.
- (c) This paper consists of **three** sections; **A, B and C**.
- (d) Answer **all** the questions in sections; **A, B and C**.
- (e) All answers must be written in the spaces provided.
- (f) Silent non-programmable electronic calculators may be used.
- (g) This paper consists of **18 printed pages**.
- (h) Candidates should check the question paper to ascertain that all the pages are printed as indicated and that no questions are missing.
- (i) Candidates should answer the questions in English.

For Examiner's Use Only

Section	Question	Maximum Score	Candidate's Score
A	1 - 10	34	
B	11 - 19	33	
C	20 - 34	33	
Total Score			

915037

© 2015 The Kenya National Examinations Council



Turn over

SECTION A: BIOLOGY (34 marks)

Answer all the questions in this section in the spaces provided.

- 1 (a) What is meant by the following terms:
- (i) habitat; (1 mark)
.....
.....
 - (ii) population? (1 mark)
.....
.....
- (b) Explain **one** effect for each of the following air pollutants to the environment:
- (i) sulphur (IV) oxide; (2 marks)
.....
.....
 - (ii) smoke. (2 marks)
.....
.....
- 2 (a) Explain the significance of the position of testis in humans. (2 marks)
.....
.....
.....
- (b) State **two** reasons why reproduction is important. (2 marks)
.....
.....
.....

3 (a) **Figure 1** illustrates a longitudinal section of a bean seed.

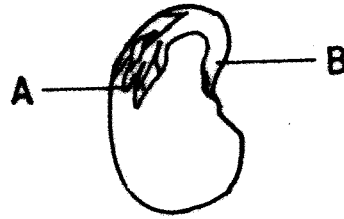


Figure 1

Name the parts labelled A and B.

A (1 mark)

B (1 mark)

(b) (i) Distinguish between the terms epicotyl and hypocotyl. (1 mark)

.....
.....
.....

(ii) Name a plant hormone that promotes apical dominance. (1 mark)

.....

4 (a) State the meaning of the following terms:

(i) genetics; (1 mark)

.....
.....
.....

(ii) genes. (1 mark)

.....
.....
.....

- (b) What is meant by:
- (i) complete dominance; (1 mark)

.....
.....

- (ii) phenotype? (1 mark)

.....
.....

- 5 (a) Explain why Lamarck's evolution theory was discredited. (2 marks)

.....
.....
.....

- (b) What is meant by complete metamorphosis in insects? (1 mark)

.....
.....
.....

- 6 State **two** similarities between the endocrine and the nervous system. (2 marks)

.....
.....
.....

- 7 (a) How are the vascular bundles arranged in young:

- (i) monocotyledonous stem; (1 mark)

.....

- (ii) dicotyledonous stem? (1 mark)

.....

(b) Figure 2 illustrates the human arm.

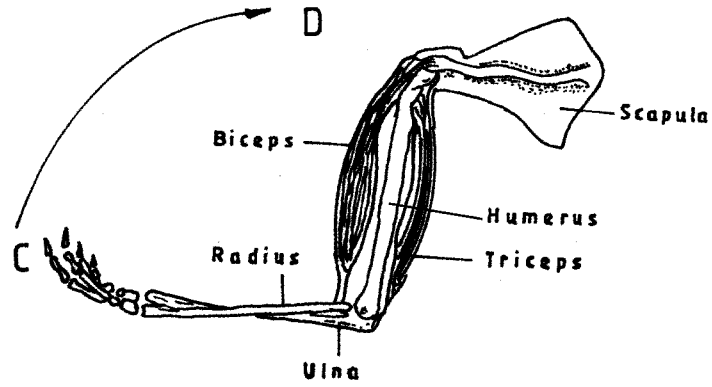


Figure 2

Describe how the muscles work to move the forearm from point C to D. (1 mark)

.....

.....

8 (a) Name the causative agent of syphilis. (1 mark)

.....

(b) Which hormone brings about ovulation in humans? (1 mark)

.....

9 (a) State **two** ways in which genetic counselling is used in the community. (2 marks)

.....

.....

.....

(b) State how the following eye defects can be corrected:

(i) short sightedness; (1 mark)

.....

.....

(ii) astigmatism. (1 mark)

.....

.....

10 State **two** differences between simple reflex action and conditioned reflex action. (2 marks)

.....

.....

.....

.....

www.atikaschool.com

SECTION B: CHEMISTRY (33 marks)

Answer *all* the questions in this section in the spaces provided.

- 11 (a) State the **two** conditions under which Graham's Law of diffusion operates. (1 mark)

.....

.....

- (b) **Figure 3** shows a set-up in which the porous pot contained air.

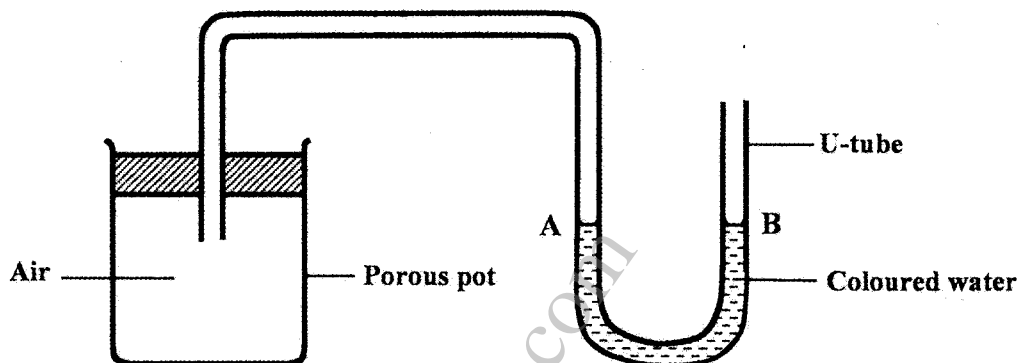


Figure 3

- (i) State the observation made in the U-tube if air was replaced with carbon (IV) oxide. (1 mark)

.....

.....

.....

- (ii) Explain the observation made in (b) (i) above. (1 mark)

.....

.....

.....

.....

.....

.....

.....

.....

.....

Kenya Certificate of Secondary Education, 2015
237/2

02325240

- 12 (a) What is meant by the term **molarity** of a solution? (1 mark)

.....

- (b) 100 cm³ of 0.1 M sodium hydroxide solution was mixed with 100 cm³ of 1 M sodium hydroxide solution.

- (i) calculate the number of moles contained in the mixture; (2 marks)

.....

- (ii) Determine the molarity of the mixture. (2 marks)

.....

- 13 (a) Complete the following table:

Polymer	Use
Cellulose
.....	Plastic water pipes

(2 marks)

- (b) State **two** pollution effects of detergents to the environment. (2 marks)

.....

14 Explain the following statements:

(a) sulphur (IV) oxide is a bleaching agent in wet conditions; (2 marks)

.....
.....
.....
.....
.....

(b) newspapers turn yellow-brown after exposure to sunlight over a period of time. (1 mark)

.....
.....
.....
.....

www.atikaschool.com

15 **Figure 4** is a representation of Down's cell used in the extraction of sodium metal. Study it and answer the questions that follow.

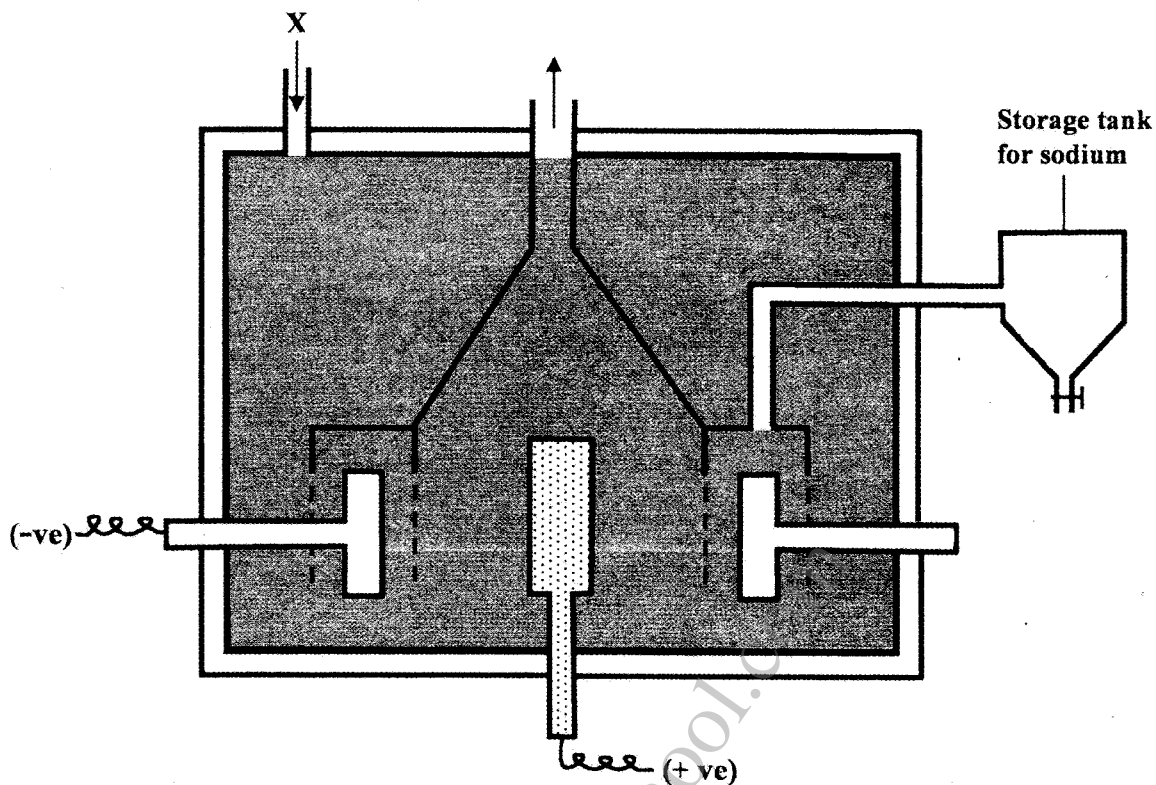


Figure 4

(a) Name the materials that are introduced at X. (1 mark)

.....

(b) Write an equation for the reaction that occurs at the anode. (1 mark)

.....

(c) What material is the cathode made of? (1 mark)

.....

(d) Give **two** industrial uses of sodium metal. (1 mark)

.....

- 16 (a) What is meant by “enthalpy of combustion”? (1 mark)

.....

.....

.....

- (b) The table below shows heating values of some fuels. Use it to answer the questions that follow.

Fuel	State at room temperature	Heating value in kJg^{-1}
Ethanol	Liquid	30
Kerosene	Liquid	48
Charcoal	Solid	33
Propane	Gas	50

- (i) Identify the best fuel for use in jet engines. (1 mark)

.....

- (ii) Give **two** reasons for the answer in b(i) above. (1 mark)

.....

.....

.....

- (iii) Which fuel has the greatest pollution effect? Explain. (2 marks)

.....

.....

.....

.....

17 Explain how each of the following affects rate of chemical reaction.

(a) Increase in surface area; (2 marks)

.....

.....

.....

.....

.....

(b) Decrease in concentration. (2 marks)

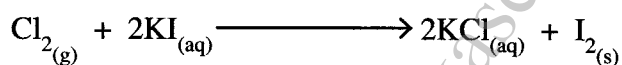
.....

.....

.....

.....

18 (a) When chlorine gas is passed through a solution of potassium iodide, the following reaction takes place.



Identify the oxidising agent in the reaction. (1 mark)

.....

.....

.....

(b) Explain the pollution effects of chloroflouorocarbons (CFCs) to the environment. (2 marks)

.....

.....

.....

19 When a green solid is heated, it forms a black residue and produces a colourless gas which forms a white precipitate with a solution of calcium hydroxide.

(a) Identify the green solid. (1 mark)

.....

(b) Write an equation for the reaction that produces the white precipitate. (1 mark)

.....

www.atikaschool.com

Kenya Certificate of Secondary Education, 2015

237/2

02325240

915037

Turn over

SECTION C: PHYSICS (33 marks)

Answer *all* the questions in this section in the spaces provided.

20 Figure 5 is a diagram of a periscope.

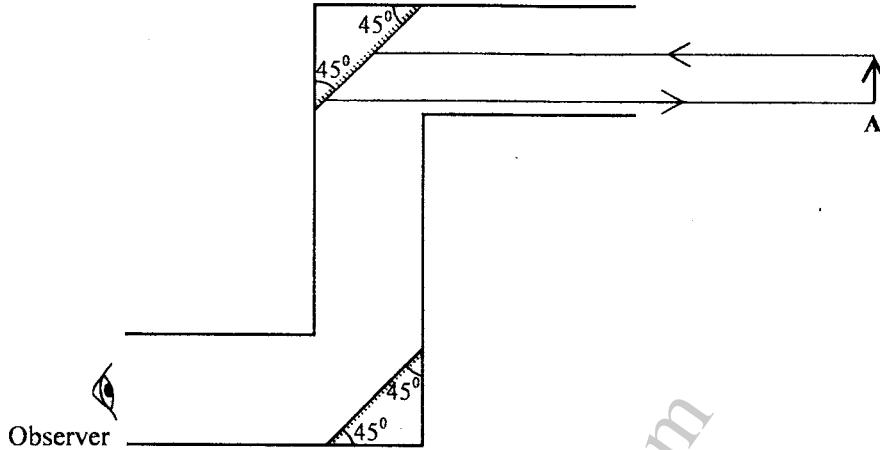


Figure 5

Complete the ray diagram to show the image of object A as seen by the observer.

(3 marks)

21 An ebonite rod is charged by rubbing with fur. The rod becomes negatively charged while the fur becomes positively charged. Explain how this happens. (2 marks)

.....

.....

.....

22 Draw and label a simple electric circuit diagram having a cell, a bulb, a switch and an ammeter. (Use circuit symbols) (2 marks)

23 State **two** factors that affect the speed of sound in air. (2 marks)

.....
.....

24 Describe a:

(a) transverse wave; (1 mark)

.....
.....

(b) longitudinal wave. (1 mark)

.....
.....

25 A student placed two iron nails in contact with one end of a bar magnet. The student observed that the free ends of nails moved apart from each other. Explain this observation. (3 marks)

.....
.....
.....

26 Define electrical resistance and state its SI unit. (2 marks)

.....
.....

www.atkashschool.com

- 27 **Figure 6** shows a set-up used to study the effect of placing a triangular glass prism in the path of white light.

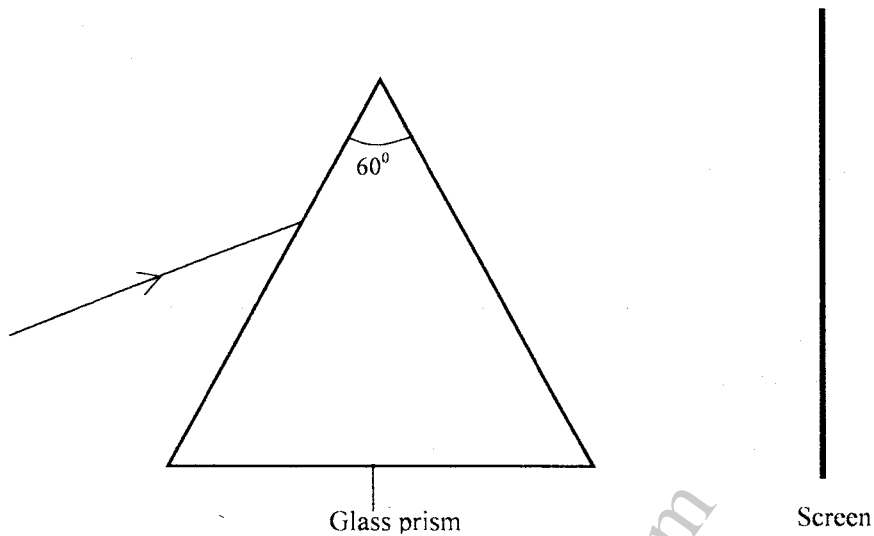


Figure 6

- (a) State what will be observed on the screen. (1 mark)

.....

- (b) Name the phenomenon being studied. (1 mark)

.....

- 28 A student made two heating coils using two different wires and used the coils to heat equal amounts of water in identical containers for the same length of time. At the end of heating, water in one of the containers was at a higher temperature than the other. State **two** factors that would have led to the difference in temperatures. (2 marks)

.....

.....

- 29 **Figure 7** shows an object O placed in front of a converging lens which has the principle focus at F. (3 marks)

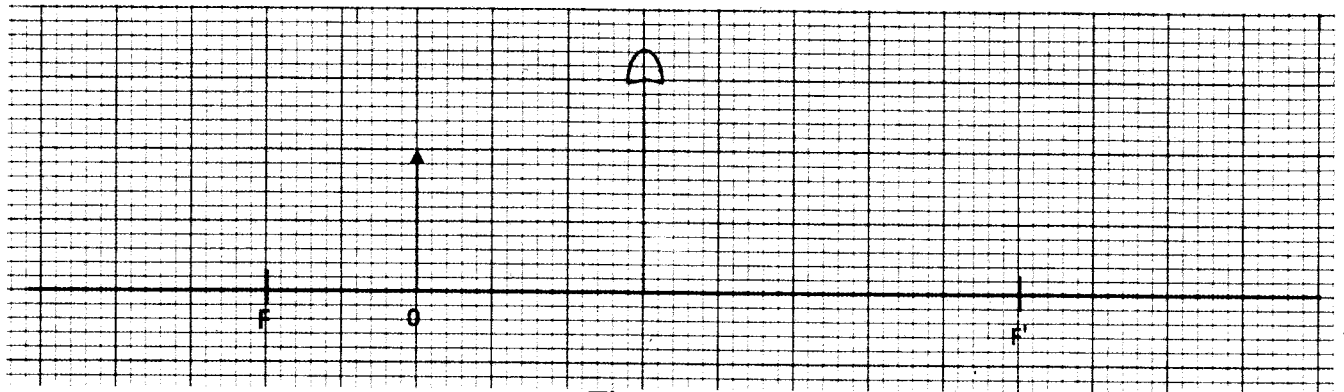


Figure 7

On the figure, construct a ray diagram to locate the image formed.

- 30 A shopkeeper pays an electricity bill of ksh. 180.90 for using four identical bulbs for 3 hours per day for 30 days. If the cost of electricity is ksh. 6.70 per kilowatt hour, determine the power of each bulb. (3 marks)

.....

.....

.....

- 31 State the role of the control grid in a cathode ray oscilloscope (CRO). (1 mark)

.....

.....

- 32 State any **two** dangers of exposure to X-rays. (2 marks)

.....

.....

- 33 Explain how a photographic film is used to detect radiations. (2 marks)

.....

.....

.....

34 Explain how a P-N junction diode can be forward biased.

(2 marks)

.....

.....

.....

THIS IS THE LAST PRINTED PAGE

www.atikaschool.com